



DÔME FLAX 1.0 - 1 DÔME FLAX

Specification sheet

Dôme is a high-end product, Made in France, focusing on miniaturization as much as on high-tech. With its sleek design and lacquered finish, Dôme suits each and every living spaces (on a table, mounted to a wall or an optional stand) and blends in perfectly with a flat screen. Thanks to its Flax cone, sandwich cone made of linen, Dôme Flax gets an important improvement in definition and a larger specialization thanks to a better linearity of the frequency response.

Patent N° WO 2014/106713 A1

Dôme Flax

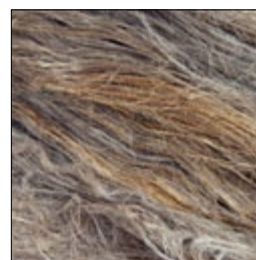
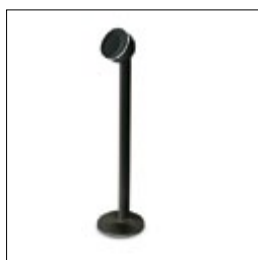
Ultra compact 2-way sealed speaker



> Black or White finish

Key points Dôme Flax

- High-fidelity speaker, patented Flax technology
- Focal sound with advanced technologies
- Integrated speaker: in wall, in ceiling, on furniture or standing
- High-gloss lacquered Aluminium body
- Made in France



Dôme Flax satellite

Type	2-way compact sealed speaker
Drivers	4" (10cm) Flax mid-bass 1" (25mm) Al/Mg inverted dome tweeter
Frequency response (±3dB)	80Hz - 28kHz
Low frequency point (-6dB)	72Hz
Sensitivity (2.83V/1m)	88dB
Nominale impedance	8 Ohms
Minimum impedance	4 Ohms
Crossover frequency	2500Hz
Recommended amplifier power	25 - 100W
Dimensions (HxWxD)	6 ^{3/4} x5 ^{11/16} x5 ^{5/8} " (172x144x143mm)
Net weight	1,9 kg