

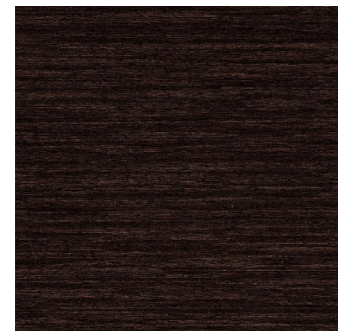
SONETTO



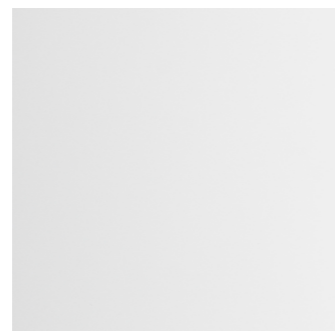


FINISHES COMPOSITION

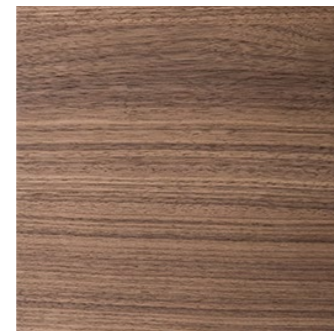
WENGE OPEN PORE



WHITE MATTE



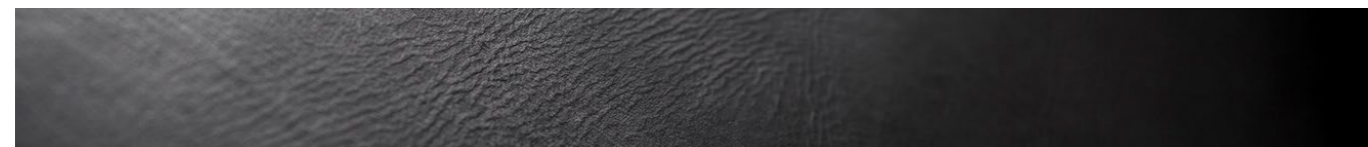
WALNUT OPEN PORE



PIANO BLACK HIGH GLOSS



BLACK LEATHER



SONETTO VIII



**SYSTEM :**  
3-way floorstanding loudspeaker system.  
Vented box design.

**LOUDSPEAKERS :**  
TW :High Definition DAD™ driver. DKM dome diaphragm, Neo Magnet system. Ø 29mm  
MD : Ultra-free compression basket, Custom diaphragm made with cellulose pulp and other natural fibers, Ø 150mm  
W : Ultra-free compression basket, aluminum cone for maximum speed. Ø 3x180mm cone drivers.

**CROSS-OVER :**  
270Hz - 3.000Hz

**FREQUENCY RESPONSE :**  
36 Hz – 25.000 Hz

**SENSITIVITY :**  
90 dB SPL (2.83 V/1m)

**NOMINAL IMPEDANCE :**  
4 ohm.

**SUGGESTED AMPLIFIER POWER OUTPUT :**  
50W – 300W, without clipping

**DIMENSIONS (HxWxD) :**  
1188 x 283 x 427 mm  
47 x 11 x 17 in

**WEIGHT (EA) :**  
26,3 Kg - 57,9 lb

SONETTO V



**SYSTEM :**  
3-way floorstanding loudspeaker system.  
Vented box design.

**LOUDSPEAKERS :**  
TW :High Definition DAD™ driver. DKM dome diaphragm, Ø 29mm  
MD : Ultra-free compression basket, Custom diaphragm made with cellulose pulp and other natural fibers, Ø 150mm  
W : Ultra-free compression basket, aluminum cone for maximum speed. Ø 2x180mm cone drivers.

**CROSS-OVER :**  
235Hz - 3.000Hz

**FREQUENCY RESPONSE :**  
38 Hz – 25.000 Hz

**SENSITIVITY :**  
90 dB SPL (2.83 V/1m)

**NOMINAL IMPEDANCE :**  
4 ohm.

**SUGGESTED AMPLIFIER POWER OUTPUT :**  
50W – 300W, without clipping

**DIMENSIONS (HxWxD) :**  
1072 x 258 x 409 mm  
42 x 10 x 16 in

**WEIGHT (EA) :**  
22,6 Kg - 49,8 lb

SONETTO III



**SYSTEM :**  
3-way floorstanding loudspeaker system.  
Vented box design.

**LOUDSPEAKERS :**  
TW :High Definition DAD™ driver. DKM dome diaphragm, Ø 29mm  
MD : Ultra-free compression basket. Custom diaphragm made with cellulose pulp and other natural fibers, Ø 150mm  
W : Ultra-free compression basket, aluminum cone for maximum speed. Ø 2x150mm cone drivers.

**CROSS-OVER :**  
220Hz - 3.250Hz

**FREQUENCY RESPONSE :**  
42 Hz – 25.000 Hz

**SENSITIVITY :**  
89 dB SPL (2.83 V/1m)

**NOMINAL IMPEDANCE :**  
4 ohm.

**SUGGESTED AMPLIFIER POWER OUTPUT :**  
50W – 250W, without clipping

**DIMENSIONS (HxWxD) :**  
1018 x 219 x 305 mm  
40 x 9 x 12 in

**WEIGHT (EA) :**  
16 Kg - 35,2 lb

## SONETTO II



**SYSTEM :**  
2-way shelf loudspeaker system. Vented box design.

**LOUDSPEAKERS :**  
TW : High Definition DAD™ driver. DKM dome diaphragm, Ø 29mm  
MW : Ultra-free compression basket. Custom diaphragm made with cellulose pulp and other natural fibers, Ø 165mm

**CROSS-OVER :**  
2650Hz

**FREQUENCY RESPONSE :**  
42 Hz – 25.000 Hz

**SENSITIVITY :**  
87 dB SPL (2.83 V/1m)

**NOMINAL IMPEDANCE :**  
4 ohm.

**SUGGESTED AMPLIFIER POWER OUTPUT :**  
40W – 200W, without clipping

**DIMENSIONS (HxWxD) :**  
370 x 250 x 334 mm  
15 x 10 x 13 in

**WEIGHT STAND NOT INCLUDED :**  
6,8 kg - 14,9 lb ea

**OPTIONAL STAND DIMENSION (HXWXD) :**  
386 x 315 x 686 mm  
12.4 x 15.2 x 27 in

**OPTIONAL STAND WEIGHT (EA) :**  
4,7 kg - 10,3 lb

## SONETTO I



**SYSTEM :**  
2-way shelf loudspeaker system. Vented box design.

**LOUDSPEAKERS :**  
TW : High Definition DAD™ driver. DKM dome diaphragm, Ø 29mm  
MW : Ultra-free compression basket. Custom diaphragm made with cellulose pulp and other natural fibers, Ø 150mm

**CROSS-OVER :**  
2.500Hz

**FREQUENCY RESPONSE :**  
45 Hz – 25.000 Hz

**SENSITIVITY :**  
87 dB SPL (2.83 V/1m)

**NOMINAL IMPEDANCE :**  
4 ohm.

**SUGGESTED AMPLIFIER POWER OUTPUT :**  
30W – 150W, without clipping

**DIMENSIONS (HxWxD) :**  
359 x 219 x 305 mm  
14 x 9 x 12 in

**WEIGHT (EA) :**  
5,5 kg - 12,1 lb

**OPTIONAL STAND DIMENSION (HXWXD) :**  
386 x 315 x 686 mm  
12.4 x 15.2 x 27 in

**OPTIONAL STAND WEIGHT (EA) :**  
4,7 kg - 10,3 lb

## SONETTO CII



**SYSTEM :**  
2-way shelf loudspeaker system. Vented box design.

**LOUDSPEAKERS :**  
TW : High Definition DAD™ driver. DKM dome diaphragm, Neo Magnet system. Ø 29mm  
MD : Ultra-free compression basket. Custom diaphragm made with cellulose pulp and other natural fibers, Ø 2 x 150mm  
W : Ultra-free compression basket. Custom diaphragm made with cellulose pulp and other natural fibers, Ø 2 x 150 mm

**CROSS-OVER :**  
220Hz - 1.650Hz

**FREQUENCY RESPONSE :**  
42 Hz – 25.000 Hz

**SENSITIVITY :**  
91 dB SPL (2.83 V/1m)

**NOMINAL IMPEDANCE :**  
4 ohm.

**SUGGESTED AMPLIFIER POWER OUTPUT :**  
50W – 300W, without clipping

**DIMENSIONS (HxWxD) :**  
289 x 743 x 409 mm  
12 x 30 x 16 in

**WEIGHT (EA) :**  
16,2 Kg - 35,7 lb

## SONETTO CI



**SYSTEM :**  
2-way shelf loudspeaker system. Vented box design.

**LOUDSPEAKERS :**  
TW : High Definition DAD™ driver. DKM dome diaphragm, Neo Magnet system. Ø 29mm  
MW : Ultra-free compression basket. Custom diaphragm made with cellulose pulp and other natural fibers, Ø 2 x 150mm cone drivers.

**CROSS-OVER :**  
1.550Hz

**FREQUENCY RESPONSE :**  
60 Hz – 25.000 Hz

**SENSITIVITY :**  
90 dB SPL (2.83 V/1m)

**NOMINAL IMPEDANCE :**  
4 ohm.

**SUGGESTED AMPLIFIER POWER OUTPUT :**  
50W – 200W, without clipping

**DIMENSIONS (HxWxD) :**  
242 x 495 x 303 mm  
10 x 20 x 12 in

**WEIGHT (EA) :**  
6,5 Kg - 14,3 lb

## SONETTO W



**SYSTEM :**  
2-way shelf loudspeaker system. Vented box design.

**LOUDSPEAKERS :**  
TW : High Definition DAD™ driver. DKM dome diaphragm, Neo Magnet system. Ø 29mm  
MW : Ultra-free compression basket. Custom diaphragm made with cellulose pulp and other natural fibers, Ø 150mm cone passive radiator.

**CROSS-OVER :**  
3.800Hz

**FREQUENCY RESPONSE :**  
60 Hz – 25.000 Hz

**SENSITIVITY :**  
89 dB SPL (2.83 V/1m)

**NOMINAL IMPEDANCE :**  
4 ohm.

**SUGGESTED AMPLIFIER POWER OUTPUT :**  
30W – 150W, without clipping

**DIMENSIONS (HxWxD) :**  
500 x 291 x 163 mm  
20 x 12 x 7 in

**WEIGHT (EA) :**  
4,8 Kg - 10,5 lb

